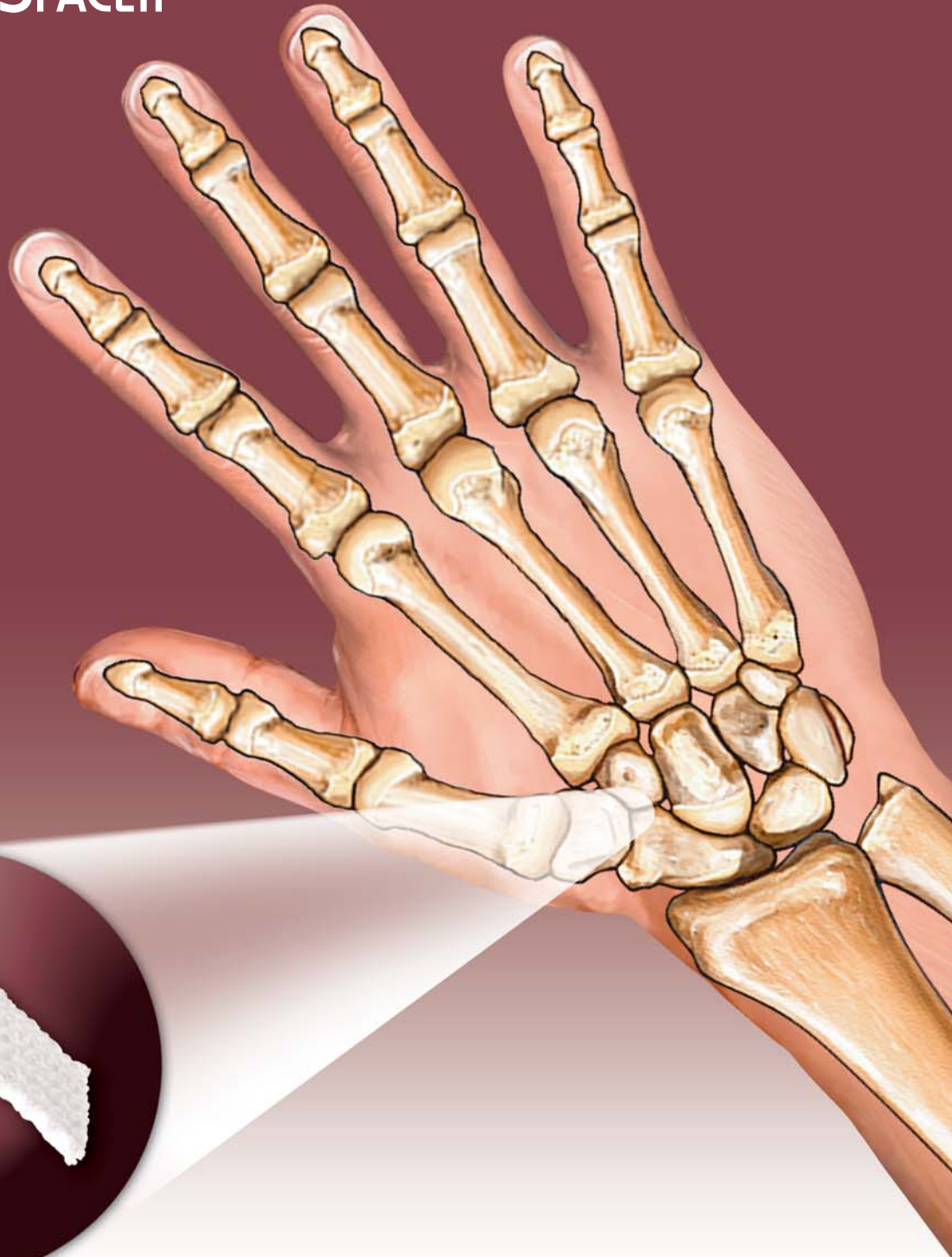


## ARTELON<sup>®</sup> STT SPACER

Designed to  
Reduce Pain  
Caused by  
Osteoarthritis  
and to Regain  
Joint Function

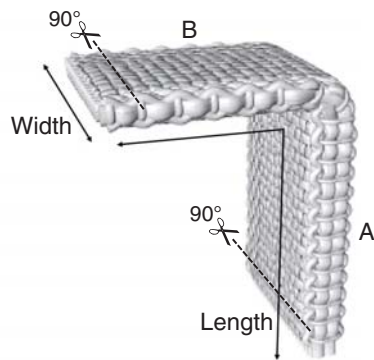


**Artelon<sup>®</sup> STT Spacer**

---

# Indicated for Use in Thumb Disabilities

- Intended to be implanted into the scaphotrapeziotrapezoidal (STT) joint as an interpositional spacer between the scaphoid bone and the trapezial-trapezoid bones
- A woven, textile device made of Artelon® fibers
- A biocompatible, degradable material made of polycaprolactone-based polyurethaneurea (PUUR)
- Safe and well tolerated—human biopsies have revealed excellent Artelon/host tissue biocompatibility in both bone and soft tissues\*
- *In vivo* biocompatibility studies have shown no adverse signs of tissue reactions, inflammation or foreign body response\*
- Vertical portion separates the surfaces of the arthritic joint from each other
- Horizontal portion fixates the device



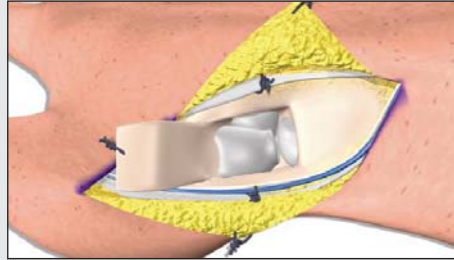
Artelon® STT Dimensions	
Wing Length (B)	14mm
Wing Width (B)	14mm
Vertical Length (A)	20mm
Vertical Width (A)	14mm

## ORDERING INFORMATION

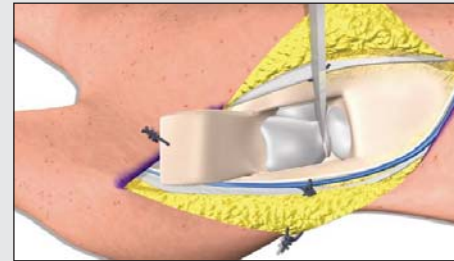
Part No.	Description
800-1002	Artelon® STT Spacer

# Surgical Technique\*\*

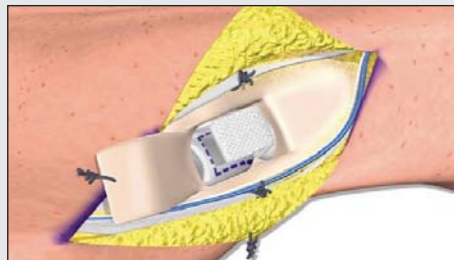
**Preparation:** Soak the ARTELON® STT Spacer in sterile saline solution (0.9% NaCl) at room temperature for at least 5 minutes before use.



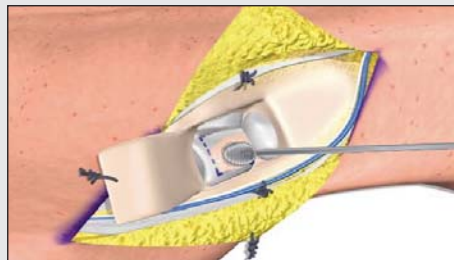
1. Open the STT joint with a dorsal incision.



2. On the trapezium and trapezoid bones, resect the proximal joint surfaces along with 1-2mm of the subcondral bone. Remove osteophytes from the joint lines. Do NOT resect the scaphoid bone.



3. Mark the position of the wing

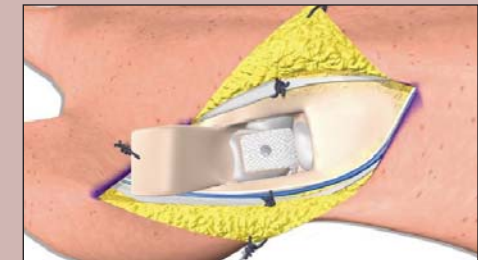


4. Using a burr, flatten the cortical bone in the marked area to create a bleeding surface.

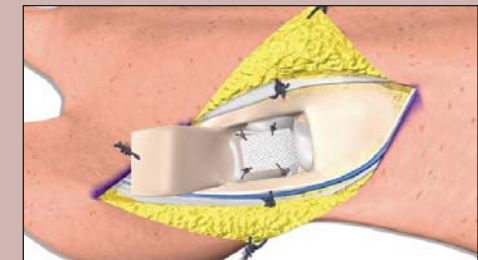
**NOTE: Remove only enough cortical bone to create a bleeding surface.**



5. The wing of the Artelon® STT Spacer is fitted in toward the resected surface of the trapezium bone.



6a. If a bone screw is used to fixate the wing, a burr channel is drilled through the trapezium bone through the volar cortical bone. It is important to ensure stable, bi-cortical fixation of the screw. Removing too much cortical bone could result in sub-optimal fixation and possible movement of the screw.



6b. If sutures are used, the device is fixedated in the cortical bone with individual sutures through burr channels. The sutures, one per corner, should not be placed closer than 2mm to the edge of the spacer. It is essential that the sutures provide a firm fixation.

**NOTE: It is imperative that the Artelon® STT Spacer is fixedated properly.**

CE 0088 \* Data on File  
\*\* Refer to Instructions for Use for complete surgical instructions

Artelon® a biodegradable polyurethaneurea, manufactured by Artimplant AB.

Artelon® is a registered trademark of Artimplant of Gothenburg Sweden and the STT Spacers are marketed in the US by Small Bone Innovations, Inc. under an exclusive license

7190 xM Copyright ©2007 Small Bone Innovations, Inc. All rights reserved.

**SBi**  
SMALL BONE INNOVATIONS

Small Bone Innovations, Inc.  
1380 South Pennsylvania Ave.  
Morrisville, PA 19067  
(215) 428-1791 / Fax (215) 428-1795  
SBI Customer Service: (800) 778-8837  
Technical Support: (866) SBI-TIPS  
www.totalsmallbone.com

Small Bone Innovations International  
ZA Les Bruyères - BP 28  
01960 Péronnas, France  
Tel: +33 (0) 474 21 58 19  
Fax: +33 (0) 474 21 43 12

Caution: United States federal law restricts this device to sale by or on the order of a physician.

Anthony Viscogliosi  
Founder and Chairman  
AViscogliosi@totalsmallbone.com

MKT 40420 Rev. B 9/07